

2013 ANCAP Safety Ratings



What is ANCAP?

Australasia's leading independent vehicle safety advocate.

The **Australasian New Car Assessment Program (ANCAP)** provides consumers with transparent information on vehicle safety through its safety rating program.

ANCAP's primary objective is to inform and educate the public about the level of occupant and pedestrian protection provided by different vehicle models in the most common types of crashes.

ANCAP is supported by the Australian and New Zealand automobile clubs, Australian Federal, State and Territory governments, the New Zealand Government, the Victorian Transport Accident Commission, NRMA Insurance and the FIA Foundation (UK).

ANCAP Member Organisations.



2013 ANCAP Safety Ratings.

In 2013, ANCAP published safety ratings for **49** vehicles.

ANCAP safety ratings are determined based on a series of internationally recognised crash tests, with vehicles awarded an ANCAP safety rating of between 1 to 5 stars indicating the level of safety they provide in the event of a crash and their ability, through technology, to avoid a crash.

ANCAP is committed to raising the bar on vehicle safety.



Small Car	Airbags	ESC	Frontal Offset	Side Impact	Pole	Pedestrian Rating	Whiplash Rating	Seat Belt Reminders	Overall Score	ANCAP Safety Rating
Audi A3 From May 2013	Frontal + Side + Head + Knee	Standard	15.41 (out of 16)	16.00 (out of 16)	2 (out of 2)	Acceptable	Good	3 (out of 3)	36.41 (out of 37)	★★★★★
Volkswagen Golf (petrol hatch) From April 2013	Frontal + Side + Head + Knee	Standard	15.92 (out of 16)	16.00 (out of 16)	2 (out of 2)	Acceptable	Good	2 (out of 3)	35.92 (out of 37)	★★★★★
Renault Clio (3 cyl petrol) From 2013	Frontal + Side + Head	Standard	14.87 (out of 16)	16.00 (out of 16)	2 (out of 2)	Acceptable	Good	3 (out of 3)	35.87 (out of 37)	★★★★★
Mercedes-Benz A-Class From 2013	Frontal + Side + Head + Knee	Standard	14.80 (out of 16)	16.00 (out of 16)	2 (out of 2)	Acceptable	Good	3 (out of 3)	35.80 (out of 37)	★★★★★
Kia Cerato (sedan & 5 door hatch) From 2013	Frontal + Side + Head	Standard	14.51 (out of 16)	16.00 (out of 16)	2 (out of 2)	Acceptable	Good	3 (out of 3)	35.51 (out of 37)	★★★★★
Suzuki SX4 S-Cross (petrol front-wheel-drive) From December 2013	Frontal + Side + Head + Knee	Standard	14.30 (out of 16)	16.00 (out of 16)	2 (out of 2)	Acceptable	Good	3 (out of 3)	35.30 (out of 37)	★★★★★
Volkswagen Beetle From 2013	Frontal + Side + Head	Standard	14.28 (out of 16)	16.00 (out of 16)	2 (out of 2)	Acceptable	Good	3 (out of 3)	35.28 (out of 37)	★★★★★
Ford Fiesta From 2013	Frontal + Side + Head + Knee	Standard	14.90 (out of 16)	15.55 (out of 16)	2 (out of 2)	Acceptable	N/A	2 (out of 3)	34.44 (out of 37)	★★★★★
Mitsubishi Mirage (hatch) From 2013	Frontal + Side + Head	Standard	14.07 (out of 16)	16.00 (out of 16)	2 (out of 2)	Acceptable	Good	2 (out of 3)	34.07 (out of 37)	★★★★★
Peugeot 208 (4 cyl 5 door hatch) From 2012	Frontal + Side + Head	Standard	14.22 (out of 16)	15.81 (out of 16)	2 (out of 2)	Acceptable	Acceptable	2 (out of 3)	34.03 (out of 37)	★★★★★
Opel Corsa (1.4 litre 3 door hatch) From 2012	Frontal + Side + Head	Standard	14.72 (out of 16)	16.00 (out of 16)	2 (out of 2)	Acceptable	Acceptable	1 (out of 3)	33.72 (out of 37)	★★★★★
Nissan Juke (front-wheel-drive H16 engine) From 2013	Frontal + Side + Head	Standard	13.69 (out of 16)	15.34 (out of 16)	2 (out of 2)	Marginal	Good	2 (out of 3)	33.03 (out of 37)	★★★★★
Fiat Panda (1.2 litre petrol) From 2013	Frontal + Side + Head	Standard	13.78 (out of 16)	14.00 (out of 16)	2 (out of 2)	Marginal	Good	3 (out of 3)	32.78 (out of 37)	★★★★★
Nissan Pulsar (1.8 litre sedan) From 2013	Frontal + Side + Head	Standard	12.93 (out of 16)	15.74 (out of 16)	2 (out of 2)	Acceptable	Acceptable	2 (out of 3)	32.67 (out of 37)	★★★★★
Nissan Pulsar (1.8 litre hatch) From 2013	Frontal + Side + Head	Standard	12.93 (out of 16)	15.74 (out of 16)	2 (out of 2)	Acceptable	Acceptable	2 (out of 3)	32.67 (out of 37)	★★★★★

Medium Car	Airbags	ESC	Frontal Offset	Side Impact	Pole	Pedestrian Rating	Whiplash Rating	Seat Belt Reminders	Overall Score	ANCAP Safety Rating
Volvo V40 D2 From 2013	Frontal + Side + Head + Knee	Standard	15.67 (out of 16)	16.00 (out of 16)	2 (out of 2)	Good	Acceptable	3 (out of 3)	36.67 (out of 37)	★★★★★
Nissan Altima From 2013	Frontal + Side + Head	Standard	15.42 (out of 16)	16.00 (out of 16)	2 (out of 2)	Acceptable	Good	3 (out of 3)	36.42 (out of 37)	★★★★★
Mercedes-Benz CLA-Class From 2013	Frontal + Side + Head + Knee	Standard	15.16 (out of 16)	16.00 (out of 16)	2 (out of 2)	Acceptable	Good	3 (out of 3)	36.16 (out of 37)	★★★★★
Skoda Octavia (front-wheel-drive) From November 2013	Frontal + Side + Head + Knee	Standard	15.87 (out of 16)	16.00 (out of 16)	2 (out of 2)	Acceptable	Good	2 (out of 3)	35.87 (out of 37)	★★★★★
Citroen DS5 From 2012	Frontal + Side + Head	Standard	14.66 (out of 16)	16.00 (out of 16)	2 (out of 2)	Marginal	Good	3 (out of 3)	35.66 (out of 37)	★★★★★
Holden Malibu From 2013	Frontal + Side + Head	Standard	15.47 (out of 16)	16.00 (out of 16)	2 (out of 2)	Acceptable	Good	2 (out of 3)	35.47 (out of 37)	★★★★★
Mazda 6 From December 2012	Frontal + Side + Head	Standard	14.44 (out of 16)	16.00 (out of 16)	2 (out of 2)	Acceptable	Good	3 (out of 3)	35.44 (out of 37)	★★★★★
Proton Suprima S From December 2013	Frontal + Side + Head	Standard	14.53 (out of 16)	15.72 (out of 16)	2 (out of 2)	Marginal	Good	2 (out of 3)	34.25 (out of 37)	★★★★★
Proton Preve From 2013	Frontal + Side + Head	Standard	14.53 (out of 16)	15.72 (out of 16)	2 (out of 2)	Marginal	Good	2 (out of 3)	34.25 (out of 37)	★★★★★
Honda Accord From July 2013	Frontal + Side + Head	Standard	11.21 (out of 16)	16.00 (out of 16)	N/A	Acceptable	N/A	2 (out of 3)	29.21 (out of 37)	★★★★★
MG 6 From 2012	Frontal + Side + Head	Standard	10.22 (out of 16)	13.51 (out of 16)	2 (out of 2)	Marginal	N/A	2 (out of 3)	27.73 (out of 37)	★★★★★

Large Car	Airbags	ESC	Frontal Offset	Side Impact	Pole	Pedestrian Rating	Whiplash Rating	Seat Belt Reminders	Overall Score	ANCAP Safety Rating
Holden Caprice From May 2013	Frontal + Side + Head	Standard	14.06 (out of 16)	16.00 (out of 16)	2 (out of 2)	Marginal	Good	3 (out of 3)	35.06 (out of 37)	★★★★★
Holden Commodore (sedan & wagon) From May 2013	Frontal + Side + Head	Standard	14.06 (out of 16)	16.00 (out of 16)	2 (out of 2)	Marginal	Good	3 (out of 3)	35.06 (out of 37)	★★★★★

Sports Car	Airbags	ESC.	Frontal Offset	Side Impact	Pole	Pedestrian Rating	Whiplash Rating	Seat Belt Reminders	Overall Score	ANCAP Safety Rating
Toyota 86 From 2012	Frontal + Side + Head + Knee	Standard	14.97 (out of 16)	15.43 (out of 16)	2 (out of 2)	Acceptable	Good	2 (out of 3)	34.40 (out of 37)	★★★★★
People Mover	Airbags	ESC.	Frontal Offset	Side Impact	Pole	Pedestrian Rating	Whiplash Rating	Seat Belt Reminders	Overall Score	ANCAP Safety Rating
Kia Rondo From 2013	Frontal + Side + Head	Standard	15.20 (out of 16)	16.00 (out of 16)	2 (out of 2)	Acceptable	Good	3 (out of 3)	36.20 (out of 37)	★★★★★
Proton Exora From 2013	Dual Frontal + Side head/chest	Standard	10.55 (out of 16)	14.82 (out of 16)	N/A	Marginal	Marginal	1 (out of 3)	26.37 (out of 37)	★★★★★
Compact SUV	Airbags	ESC.	Frontal Offset	Side Impact	Pole	Pedestrian Rating	Whiplash Rating	Seat Belt Reminders	Overall Score	ANCAP Safety Rating
Subaru Forester From 2013	Frontal + Side + Head + Knee	Standard	14.64 (out of 16)	16.00 (out of 16)	2 (out of 2)	Acceptable	Good	3 (out of 3)	35.64 (out of 37)	★★★★★
Holden Trax From 2013	Frontal + Side + Head	Standard	15.18 (out of 16)	16.00 (out of 16)	2 (out of 2)	Acceptable	Acceptable	2 (out of 3)	35.18 (out of 37)	★★★★★
Ford EcoSport From 2013	Frontal + Side + Head + Knee	Standard	15.14 (out of 16)	16.00 (out of 16)	2 (out of 2)	Acceptable	Good	2 (out of 3)	35.14 (out of 37)	★★★★★
Medium SUV	Airbags	ESC.	Frontal Offset	Side Impact	Pole	Pedestrian Rating	Whiplash Rating	Seat Belt Reminders	Overall Score	ANCAP Safety Rating
Ford Kuga From 2013	Frontal + Side + Head + Knee	Standard	15.33 (out of 16)	16.00 (out of 16)	2 (out of 2)	Acceptable	Good	3 (out of 3)	36.33 (out of 37)	★★★★★
Toyota RAV4 From 2013	Frontal + Side + Head + Knee	Standard	13.56 (out of 16)	16.00 (out of 16)	2 (out of 2)	Acceptable	Good	3 (out of 3)	34.56 (out of 37)	★★★★★

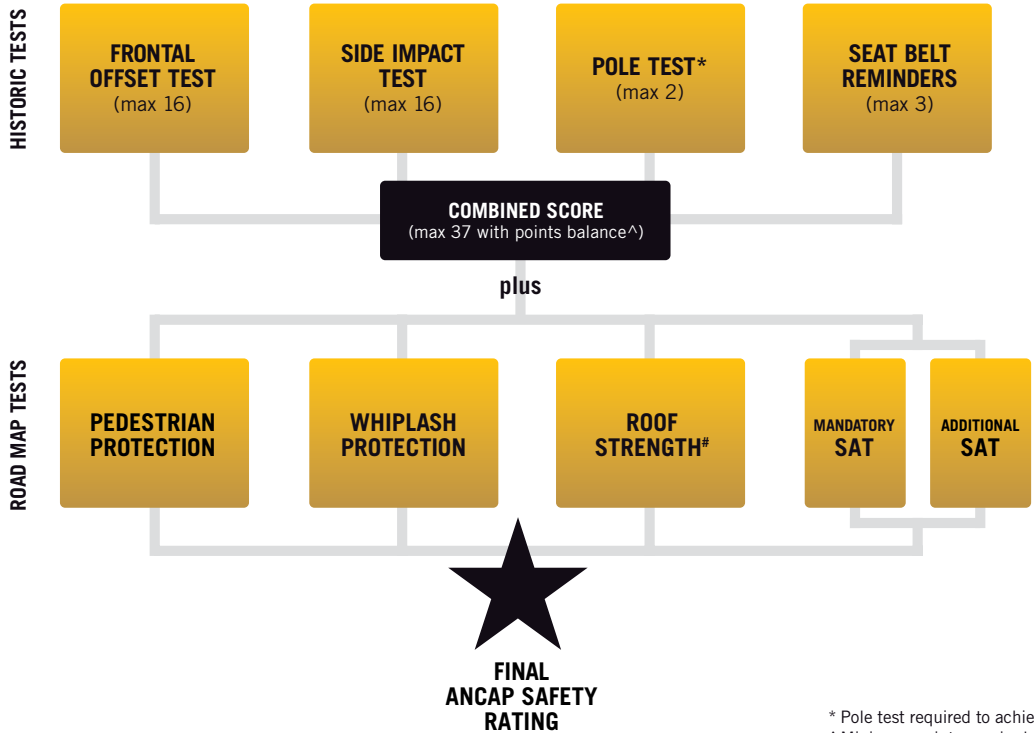
Large SUV	Airbags	ESC.	Frontal Offset	Side Impact	Pole	Pedestrian Rating	Whiplash Rating	Seat Belt Reminders	Overall Score	ANCAP Safety Rating
Land Rover Range Rover (TD V6) From 2013	Frontal + Side + Head	Standard	15.19 (out of 16)	16.00 (out of 16)	2 (out of 2)	Acceptable	Good	3 (out of 3)	36.19 (out of 37)	★★★★★
Nissan Pathfinder From October 2013	Frontal + Side + Head	Standard	14.73 (out of 16)	16.00 (out of 16)	2 (out of 2)	Marginal	Good	3 (out of 3)	35.73 (out of 37)	★★★★★
Isuzu MU-X (4x4) From 2013	Frontal + Side + Head	Standard	13.58 (out of 16)	16.00 (out of 16)	2 (out of 2)	Marginal	Good	2 (out of 3)	33.58 (out of 37)	★★★★★
Mitsubishi Pajero From April 2013	Frontal + Side + Head	Standard	13.41 (out of 16)	16.00 (out of 16)	2 (out of 2)	Poor	N/A	2 (out of 3)	33.41 (out of 37)	★★★★★
Toyota Landcruiser LC200 (VX and Sahara) 2007-2012	Frontal + Side + Head + Knee	Standard	13.09 (out of 16)	16.00 (out of 16)	2 (out of 2)	Marginal	Marginal	2 (out of 3)	33.09 (out of 37)	★★★★★
Toyota Landcruiser LC200 From 2013	Frontal + Side + Head + Knee	Standard	13.09 (out of 16)	16.00 (out of 16)	2 (out of 2)	Marginal	Marginal	2 (out of 3)	33.09 (out of 37)	★★★★★
Fiat Freemont (diesel) From 2013	Frontal + Side + Head	Standard	12.15 (out of 16)	16.00 (out of 16)	2 (out of 2)	Marginal	N/A	2 (out of 3)	32.15 (out of 37)	★★★★★
Toyota Landcruiser LC200 (GX and GXL) 2007-2012	Frontal + Side + Head	Standard	11.09 (out of 16)	16.00 (out of 16)	2 (out of 2)	Marginal	Marginal	2 (out of 3)	31.09 (out of 37)	★★★★★

Utility/Van	Airbags	ESC.	Frontal Offset	Side Impact	Pole	Pedestrian Rating	Whiplash Rating	Seat Belt Reminders	Overall Score	ANCAP Safety Rating
Holden Commodore Ute From May 2013	Frontal + Side + Head	Standard	14.06 (out of 16)	16.00 (out of 16)	2 (out of 2)	Marginal	Good	2 (out of 3)	34.06 (out of 37)	★★★★★
Isuzu D-Max (4x4 Crew Cab) From November 2013	Frontal + Side + Head	Standard	13.58 (out of 16)	16.00 (out of 16)	2 (out of 2)	Marginal	Good	2 (out of 3)	33.58 (out of 37)	★★★★★
Toyota Hilux (4x4 Single & Extra Cab) From August 2013	Frontal + Side + Head	Standard	12.86 (out of 16)	16.00 (out of 16)	2 (out of 2)	Poor	N/A	2 (out of 3)	32.86 (out of 37)	★★★★★
Toyota Hilux (4x4 Dual Cab) From November 2013	Frontal + Side + Head	Standard	12.86 (out of 16)	16.00 (out of 16)	2 (out of 2)	Poor	N/A	2 (out of 3)	32.86 (out of 37)	★★★★★
Foton Tunland (4x4 Dual Cab) From 2012	Dual Frontal	None	8.00 (out of 16)	16.00 (out of 16)	N/A	N/A	N/A	0 (out of 3)	24.00 (out of 37)	★★★★★



Side impact test at 50 km/h.

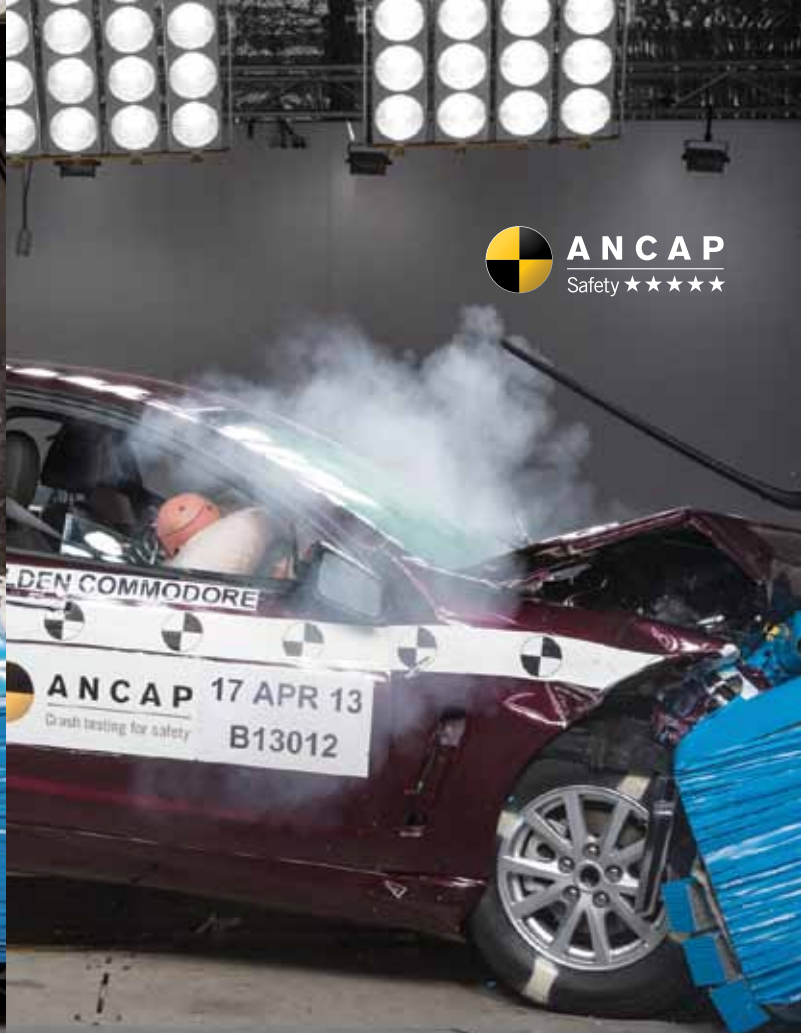
How are ANCAP safety ratings calculated?



* Pole test required to achieve 5 star rating.

^ Minimum points required for each test and for each star rating.

Roof crush testing will be introduced in 2016.



Both vehicles: Frontal offset test at 64 km/h.

How safe is your next vehicle?



To search individual crash test results for over 470 vehicles, learn more about safety technologies, explore interactive features, watch videos and to download images and media releases visit ancap.com.au or on your smartphone m.ancap.com.au

You can also follow regular updates at twitter.com/ancapcrashtests

ANCAP Australasia Ltd.
PO Box 4041, Manuka ACT 2603
ancap@ancap.com.au

ABN 25 120 448 044



ANCAP

Crash testing for safety

AUSTRALASIAN
NEW CAR ASSESSMENT
PROGRAM

As Australasia's leading independent vehicle safety advocate, ANCAP provides consumers with transparent advice on vehicle safety through its safety rating program.

ANCAP recommends 5 star rated vehicles. Accept nothing less.

ancap.com.au

While ANCAP has made every effort to ensure that information contained in this brochure is free from material error, the information may not be accurate or up to date in all respects and we do not warrant the accuracy or completeness of any information contained therein. ANCAP does not warrant or represent that a 5 star rated vehicle will protect the driver and any passengers in all types of accidents.

