

Annual Safety Review

Crash test results



EuroNCAP Testing Procedures

European NCAP (EuroNCAP) testing procedures are substantially the same as ANCAP testing procedures.

However, the EuroNCAP results are to be used as a guide only, as the structure and equipment of the European specification model may differ materially from that of the Australian or New Zealand vehicle of the same name.

Key to ANCAP / EuroNCAP Test Results

- ★ The more stars, the better a vehicle performed in an occupant crash test
- ★ The more stars, the better a vehicle performed in a pedestrian crash test
- P Optional Pole Test was carried out on this vehicle
- S ESC is standard on all variants of this model
- O ESC is optional on base variant of this model. It may be standard on higher variants
- V ESC is not available on base variant of this model, but is standard or optional on higher variants
- X ESC is not available on any variant of this model
- * Safety equipment, as tested, not standard on all variants in Australasia

What is ESC? And why does ANCAP recommend it?

Electronic Stability Control (ESC) can help save you from a serious crash.

Recent evidence from international research organisations shows that ESC can dramatically reduce the chances of being involved in certain types of crashes. ESC senses when a driver is about to lose control by detecting differences between a vehicle's course and the driver's intended direction.

By selectively applying the brakes to individual wheels, ESC helps the driver to maintain control of the vehicle and to steer safely. This can make the difference between a crash and a near-miss. Vehicles fitted with ESC are significantly less likely to be involved in single vehicle crashes than those that are not.

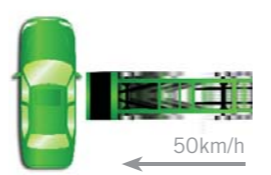
There are many different names for ESC. Some examples are :

- Electronic Stability Program (ESP)
- Vehicle Stability Control (VSC)
- Dynamic Stability Control (DSC)
- Vehicle Stability Assist (VSA)
- Vehicle Dynamics Control (VDC)

ANCAP strongly recommends that consumers specify ESC when they purchase a new vehicle.

ANCAP Crash Test Procedures

Side Impact

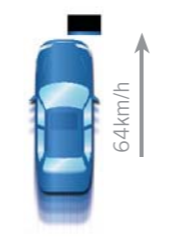


The side impact test consists of running a 950kg trolley into the driver's side of the test vehicle at 50km/h. The trolley has a crushable aluminium face to simulate the front of another vehicle.

A dummy measures the likely injuries in this type of crash.

Experience has shown that vehicles with high seating positions, like many 4WDs, perform very well in this test so ANCAP has decided to award those vehicles the full score for this component of the rating instead of conducting side impact crash tests.

Frontal Offset

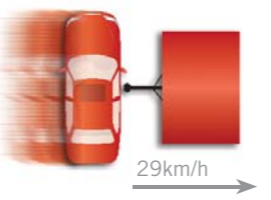


The offset frontal crash test simulates colliding with another vehicle.

In this test, 40% of the test vehicle, on the driver's side, initially makes contact with a crushable aluminium barrier at 64km/h.

A dummy measures the likely injuries in this type of crash.

Pole Test



The pole test consists of running the test vehicle sideways into a pole 250mm in diameter, lined up with the driver's head, at 29km/h.

This test is optional at the manufacturer's cost if the vehicle performs well in the side impact test and is fitted with head protection side airbags.

It simulates a collision with stationary objects such as a power pole or a tree.

A dummy measures the likely injuries in this type of crash.



Pedestrian Protection Test Results

Eighteen percent of all road fatalities in Australia and New Zealand are pedestrians and, in urban areas, pedestrians make up around a third of all road fatalities. The pedestrian impact test estimates injuries to pedestrians struck by a vehicle travelling at 40km/h. It consists of dummy components projected at the vehicle front and bonnet to evaluate injury risk for the head of an adult and child, upper leg and knee.

To simplify the crash test results ANCAP has assigned a pedestrian protection rating based on an overall score, which is portrayed as a star rating out of 4 – the more stars the better.

Occupant Protection Test Results

The occupant protection rating considers the injury measures to the vehicle occupant's head, neck, chest, abdomen, pelvis, upper and lower legs and the deformation of the vehicle's structure.

The vehicles purchased for the test program are typical of those vehicles available to new car purchasers.

A star rating is assigned on the basis of crash test results from an offset and side impact crash and includes any additional points awarded where advanced seatbelt reminders are fitted or a pole test is conducted.

To simplify the crash test results ANCAP has assigned an occupant protection rating based on an overall score, which is portrayed as a star rating out of 5 – the more stars the better.

Who is ANCAP?

The Australasian New Car Assessment Program (ANCAP) gives consumers consistent information on the level of occupant protection provided by vehicles in serious front and side crashes.

The program is supported by Australian and New Zealand automobile clubs, the State governments of NSW, Victoria, South Australia, Queensland, Western Australia and Tasmania, the New Zealand government, NRMA Insurance and the FIA Foundation.

Making Comparisons

ANCAP results are intended to compare the crash protection provided by vehicles in severe crashes. Occupants of heavier vehicles in real-world two-vehicle crashes typically fare better than occupants in lighter vehicles. This is why crash test results for vehicles with large weight differences should not be compared in that regard. However in many single-vehicle crashes, weight offers no safety advantage. In Australia, 44% of fatal crashes are single-vehicle crashes.

The Results

These crash tests are essential to determine how much protection these individual vehicles afford their occupants and pedestrians. The results in this report are based on a series of crash tests conducted in Australia and Europe. Vehicle manufacturers were given the opportunity to examine their vehicles before and after the tests and to view the crash tests and data.

The test results indicate the relative protection provided to front seat occupants when seat belts are used. The results may not be representative for models that have different safety equipment fitted.

Crash testing for safety

AUSTRALASIAN NEW CAR ASSESSMENT PROGRAM

www.ancap.com.au

The assistance of EuroNCAP is gratefully acknowledged. For more information please contact:

(08) 8202 4689

1800 502 328

www.dtei.sa.gov.au

1300 655 443

1800 042 865

(07) 3666 9148

131 171

(03) 9790 2190

(08) 9351 1680

(08) 8981 3837

(03) 6232 6344

(07) 3253 4851

(03) 6233 2572

0800 500 333

www.howsafeisyourcar.com.au

www.fiafoundation.com

132 132

0800 699 000

ANCAP AUSTRALASIA LIMITED
 ACN: 120 448 044 ABN: 25 120 448 044
 Postal Address: c/- AAA Ltd, 216 Northbourne Avenue, Canberra ACT 2601
 Telephone: 02 6247 7311 Facsimile: 02 6257 5320
 Email: ancaps@ancap.com.au Web: www.ancap.com.au
 ANCAP 11/07. Designed by Joyce Russ Advertising +61 8 (08) 8362 9982

ANCAP Occupant Crash Test Results

Vehicle Make & Model	Occupant Rating				
	★	★	★	★	★
4WD – LARGE					
Subaru Tribeca 2006 On, Front, Side and Head Airbags	P	S			
4WD – MEDIUM					
Toyota Rav4 2006 On, Dual Front Airbags	V				
MPV					
Toyota Tarago/Previa 2006 On, Dual Front Airbags	O				
LARGE CAR					
Toyota Aurion 2006 On, Front, Side and Head Airbags	S				
Toyota Camry Ateva* Aug 2006 On, Front, Side and Head Airbags	S				
Toyota Camry Altise Aug 2006 On, Dual Front Airbags	S				
Holden Commodore 2007 On, Dual Front Airbags	S				
MEDIUM CAR					
Holden Epica 2007 On, Front, Side and Head Airbags	P	X			
SMALL CAR					
Subaru Impreza Oct 07 On, Front, Side and Head Airbags	P	S			

ANCAP Occupant Crash Test Results

Vehicle Make & Model	Occupant Rating				
	★	★	★	★	★
4WD – LARGE					
Honda Civic 2006 On, Dual Front Airbags	V				
Hyundai Accent 2006 On, Dual Front Airbags	X				
UTILITY					
Mitsubishi Triton 4x4 2006 On, Dual Front Airbags	X				
VAN					
Mitsubishi Express 2003 On, No Airbags	X				

EuroNCAP Occupant Crash Test Results

Vehicle Make & Model	Occupant Rating				
	★	★	★	★	★
4WD – COMPACT					
Nissan DUALIS* LHD, 2007 On, Front, Side and Head Airbags	P	O			
Nissan DUALIS LHD, 2007 On, Dual Front Airbags	O				
4WD – MEDIUM					
Mitsubishi Outlander* LHD, 2008 On, Front, Side and Head Airbags	P	S			

EuroNCAP Occupant Crash Test Results

Vehicle Make & Model	Occupant Rating				
	★	★	★	★	★
4WD – LARGE					
Mitsubishi Outlander LHD, 2008 On, Dual Front Airbags	S				
Honda CR-V* 2007 On, Front, Side and Head Airbags	P	S			
4WD – MEDIUM					
Land Rover Freelander 2 LHD, 2007 On, Front, Side and Head Airbags	P	S			
Holden Captiva LHD, 2006 On, Dual Front and Curtain Airbags	P	S			
Audi Q7 LHD, 2006 On, Front, Side and Head Airbags	P	S			
Hyundai Santa Fe* LHD, 2006 On, Front, Side and Head Airbags	P	V			
Suzuki Grand Vitara* LHD, 2006 On, Front, Side and Head Airbags	P	V			
MPV					
Citroen Picasso LHD, 2007 On, Front, Side and Head Airbags	P	S			
Skoda Roomster LHD, 2007 On, Front, Side and Head Airbags	P	S			
VW Caddy Life* LHD, 2006 On, Front and Side Airbags	O				

EuroNCAP Occupant Crash Test Results

Vehicle Make & Model	Occupant Rating				
	★	★	★	★	★
LARGE CAR					
Ford Mondeo LHD, 2007 On, Front, Side and Head Airbags	P	S			
VW Passat LHD, 2006 On, Front, Side and Head Airbags	P	S			
Honda Legend LHD, 2006 On, Front, Side and Head Airbags	P	S			
MEDIUM CAR					
Volvo C30 LHD, 2007 On, Front, Side and Head Airbags	P	O			
Dodge Caliber LHD, 2007 On, Front, Side and Head Airbags	P	O			
Skoda Octavia 2007 On, Front, Side and Head Airbags	S				
Kia Magentis LHD, 2006 On, Front, Side and Head Airbags	P	S			
Hyundai Sonata 2006 On Front, Side and Head Airbags	P	V			
SMALL CAR					
Toyota Corolla Hatch* LHD, 2007 On, Front, Side and Head Airbags	P	X			
Peugeot 207* LHD, 2006 On, Front, Side and Head Airbags	P	V			

EuroNCAP Occupant Crash Test Results

Vehicle Make & Model	Occupant Rating				
	★	★	★	★	★
4WD – LARGE					
Toyota Corolla Sedan* LHD, 2007 On, Front, Side and Head Airbags	P	X			
Ford Focus* LHD, Mid 2007 On, Front, Side and Head Airbags	P	V			
Renault Clio 3 Diesel LHD, 2006 On, NZ Only Front, Side and Head Airbags	P	X			
Mini Cooper 2007 On, Front, Side and Head Airbags	P	O			
Hyundai i30* LHD, 2007 On, Front, Side and Head Airbags	P	X			
Honda Civic Hybrid 2007 On, Front, Side and Head Airbags	P	X			
Suzuki Sx4 LHD, 2007 On, Front, Side and Head Airbags	P	X			
Kia Rio* LHD, 2007 On, Front, Side and Head Airbags	P	X			
SPORTS					
Peugeot 207cc 2007 On, Front, Side and Head Airbags	P	V			
VW EOS LHD, 2007 on, Front, Side and Head Airbags	P	S			

ANCAP Pedestrian Crash Test Results

Vehicle Make & Model	Pedestrian Rating			
	★	★	★	★
4WD – LARGE				
Subaru Tribeca				
4WD – MEDIUM				
Toyota Rav4				
MPV				
Toyota Tarago/Previa				
LARGE CAR				
Toyota Camry Altise/Ateva				
Holden Commodore				
Toyota Aurion				
MEDIUM CAR				
Holden Epica				
SMALL CAR				
Subaru Impreza				
Honda Civic				
Hyundai Accent				
UTILITY				
Mitsubishi Triton 4x4				
VAN				
Mitsubishi Express				

EuroNCAP Pedestrian Crash Test Results

Vehicle Make & Model	Pedestrian Rating			
	★	★	★	★
4WD – COMPACT				
Nissan DUALIS				
4WD – MEDIUM				
Mitsubishi Outlander				
Honda CR-V				
4WD – LARGE				
Suzuki Grand Vitara				
Holden Captiva				
Audi Q7				
Land Rover Freelander 2				
Hyundai Santa Fe				
MPV				
Citroen Picasso				
Skoda Roomster				
VW Caddy Life				
LARGE CAR				
Honda Legend				
Ford Mondeo				
VW Passat				

EuroNCAP Pedestrian Crash Test Results

Vehicle Make & Model	Pedestrian Rating			
	★	★	★	★
MEDIUM CAR				
Skoda Octavia				
Hyundai Sonata				
Volvo C30				
Dodge Caliber				
Kia Magentis				
SMALL CAR				
Toyota Corolla Sedan				
Suzuki Sx4				
Honda Civic Hybrid				
Toyota Corolla Hatch				
Peugeot 207				
Ford Focus				
Mini Cooper				
Hyundai i30				
Kia Rio				
Renault Clio 3				
SPORTS				
Peugeot 207cc				
VW Eos				